



OPENING DOORS TO UNLIMITED POSSIBILITIES

# Golden Grove Primary School NEWSLETTER

OUR VALUES

RESILIENCE-EMPATHY-SELF MANAGEMENT-PERSEVERANCE-COURAGE-TEAMWORK

*In this issue*

- ♦ **Principal News**
- ♦ **Children's University**
- ♦ **Award Winners**
- ♦ **Community News**

**Friday 11/11/22**  
Remembrance Day

**Mon 14th - Wed 16th**  
Year 5 Camp

**Friday 18/11/22**  
Pupil Free Day

**Wed 23rd - Fri 25th**  
Year 6 camp

Principal  
Wendy Moore



Government of South Australia  
Department for Education

140 Bicentennial Drive  
Golden Grove 5125

Phone : 8289 3137  
Fax : 8289 3138

Email :  
DI.1848.info@schools.sa.edu.au  
Website :  
www.goldengps.sa.edu.au

SMS: 0416 906 270

**Term 4 Week 4, 10/11/2022**

## Mathematics at Golden Grove PS

At Golden Grove Primary School, we believe that a whole school approach to Mathematics is necessary for a consistent, developmental and challenging learning journey for all students. We believe if we intentionally plan and explicitly teach problem solving and reasoning to stretch all learners, then we will increase student achievement in numeracy.

This year we have engaged all students in a problem-solving approach to Mathematics. Our Numeracy Coordinator and class teachers have planned 'rich' challenging tasks to stretch mathematical thinking.

What makes a rich task "rich" is the environment in which it is presented. This includes the support and questioning that is used by the teacher and the roles that learners are encouraged to adopt. That is, an environment in which learners are not passive recipients of knowledge, accepting what is given, but independent assertive constructors of their own understanding who challenge and reflect.

During these lessons with 'rich' problem solving tasks, the intention is for students to feel challenged and stretched in a supportive environment where they

- take risks with learning and share and justify their thinking
- seek solutions not just memorise procedures
- exploring patterns not just memorise formulas
- formulating conjectures (opinions)
- prove and disprove ideas
- make mistakes and learn from one another

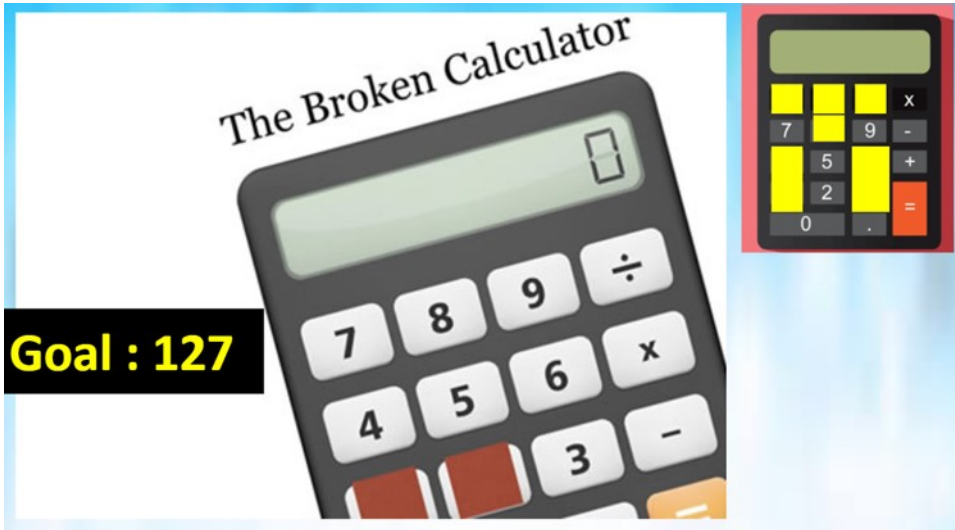
Teachers have noticed increased engagement from learners during problem solving lessons and an increased ability to explain a chosen mathematical strategy and thinking.

Here is a recent task that some classes engaged with during a problem solving lesson. Instructions are over the page.

You might like to try this at home with your child.

Happy problem solving!

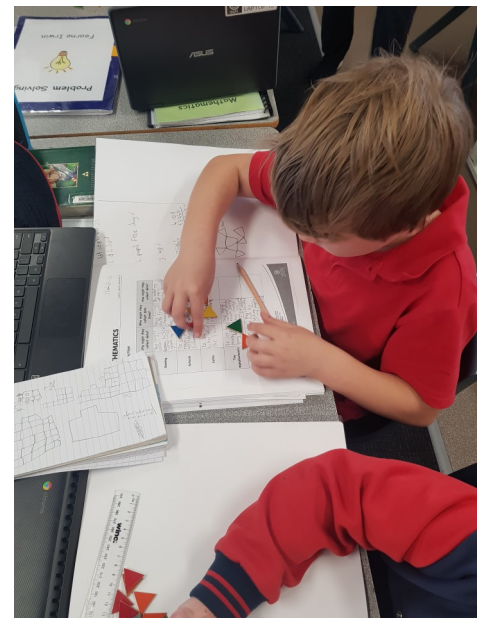
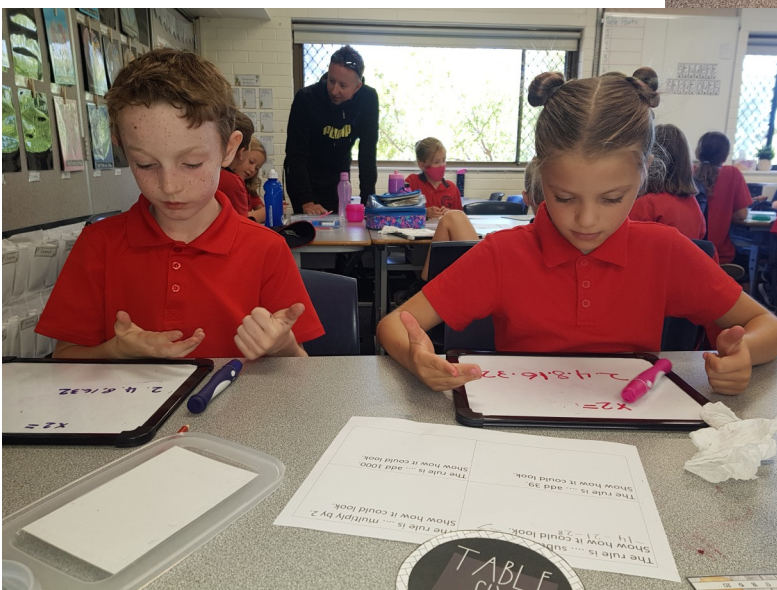
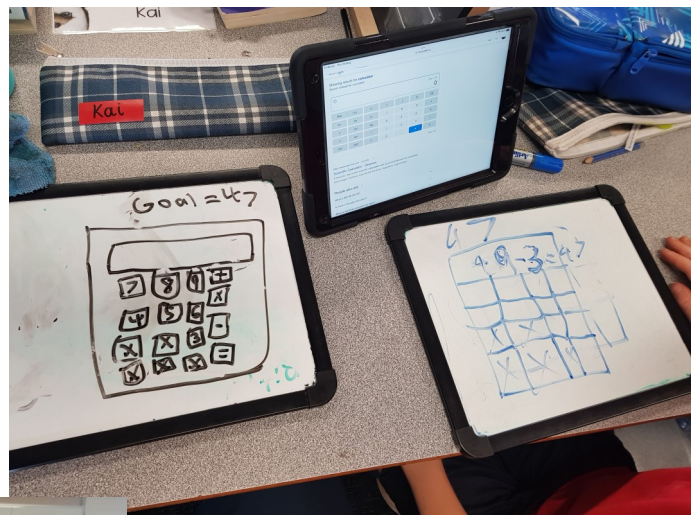




Use the available buttons (those not covered) on the broken calculator to create number sentences that equal the goal. The goal and available buttons can be modified to suit age or adjust level of challenge.

Record your number sentences and assign points for difficulty:  
 1 point for addition, 5 points for multiplication, 10 points for decimals

## Golden Grove Problem-Solvers at Work!





# CHILDREN'S UNIVERSITY



Congratulations to our 2022 Children's University Graduates!

Last night we celebrated 29 students at The University of Adelaide, Bonython Hall for achieving a minimum of 30 (out of school) hours of dedicated learning.

Throughout the year, these students have completed activities such as sport, music, arts and crafts, plus endless options of online learning through the University Portal.

Visits to museums, galleries and family holidays were highlights for our students.

Many have also contributed to volunteer hours at school.

Together they achieved a total of 1867 hours of learning!

Our CUA graduates have demonstrated a committed attitude toward learning and are to be congratulated on their exemplary behaviour at the Graduation.

A big thank you to Lynn Lamb for assisting with the administration work this year!







# Golden Grove Primary School Award Winners





# COMMUNITY NEWS

## MODBURY JUNIOR FOOTBALL CLUB

### 2023 REGISTRATIONS NOW OPEN



UNDER 7'S TO UNDER 17.5'S  
MIXED / BOYS / GIRLS TEAMS



[www.modburyhawks.com.au](http://www.modburyhawks.com.au)

KEEP ACTIVE

## TRY - WORLD TAEKWONDO

Limited time offer.  
Enrol between Nov 7  
to Nov 14, 2022

New Members Only

**5** Weeks for \$75 no more to pay.

✦ Free access to all training centres

✦ Unlimited training at no extra cost

✦ No binding contracts and no cancellation fees

[info@worldtaekwondo.com.au](mailto:info@worldtaekwondo.com.au)  
Ph: 0412 909 500

